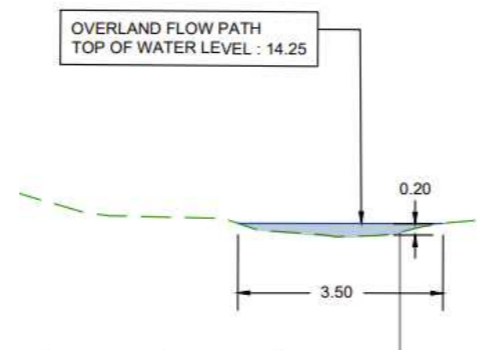
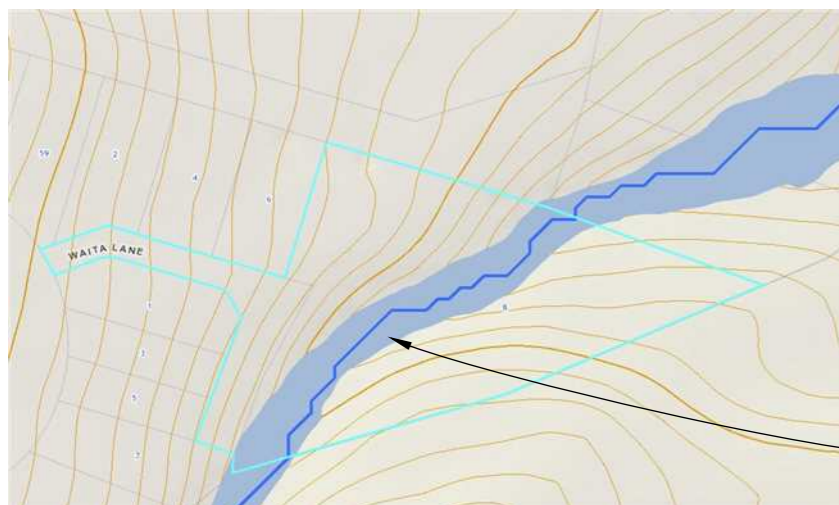


Current Zoning. Future Urban Neighbourhood Developed as Special Housing Area



### Resource Consent to be Issued

Application number(s):	BUN60387894
Applicant:	Auckland 786 Properties Limited
Address:	8 Waita Lane, Whenuapai
Proposed activity(s):	Construction of four dwellings and associated subdivision



section 3.50 wide flow path

Dare Consultants Ltd  
 40A Sylvan Ave, Northcote  
 Auckland  
 Contact  
 John Dare BE, ME, CMENZ, Dip TP  
 M.029 2022200 e john@dare.co.nz



RC Being Processed	4 units
Type A1 4 bedroom	2 units
Type A2 3 bedroom	5 units
Type B 3 bedroom	4 units
total	15 units

Dare Consultants Ltd  
 40A Sylvan Ave, Northcote  
 Auckland  
 Contact  
 John Dare BE, ME. CMENZ, Dip TP  
 M.029 2022200 e john@dare.co.nz

site area 2583sm

Overall Site  
 Plan

Potential  
 8 Waita Lane, Hobsonville  
 Auckland

DRAFT

date 2 Oct 23 Scale at A3 1:300

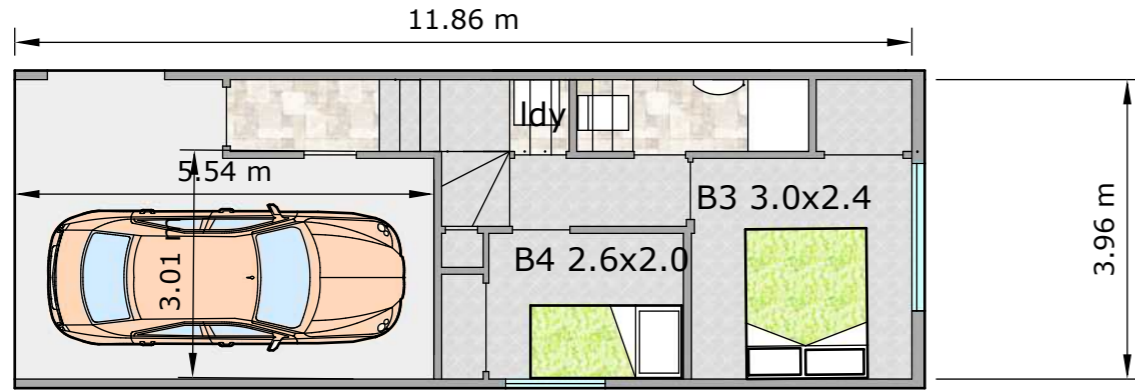
# Plan A

A1 4 bedroom, 3 bathroom, garage  
 A2 3 bedroom, 3 bathroom, garage

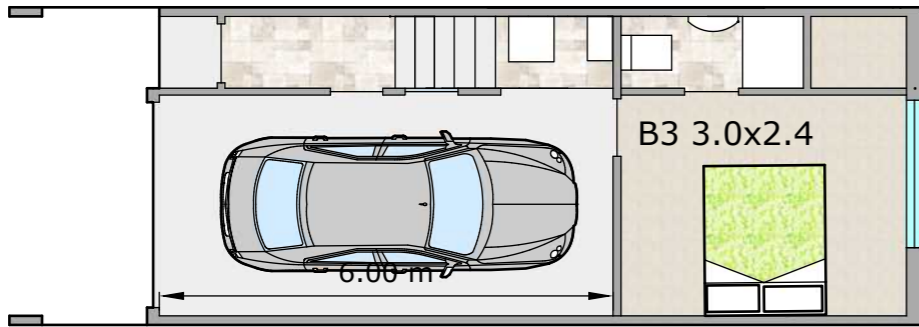
## floor areas

ground	48.6sm for A1	46.26 for A2
middle	42.6sm + deck 8sm	
top	42.6sm	
deck	133.8sm for A1	127.8sm for A2
	8sm	

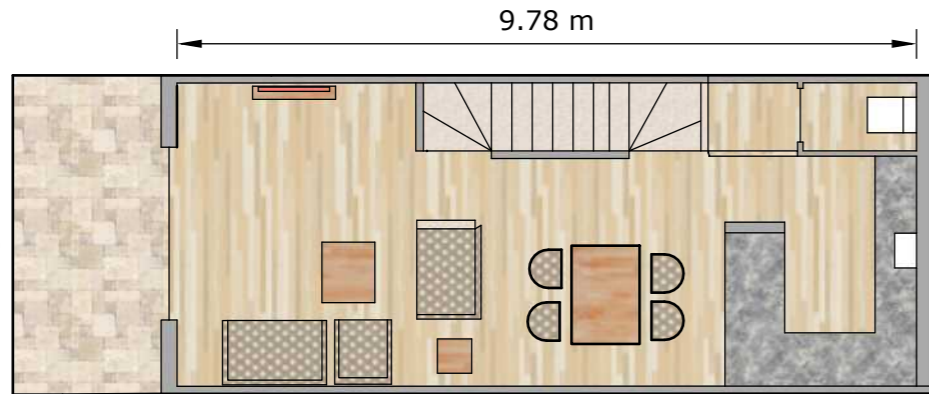
A1



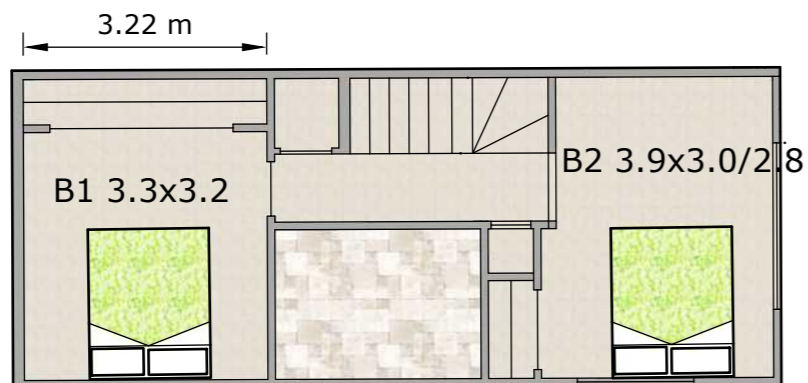
A2



A1 & A2



A1 & A2

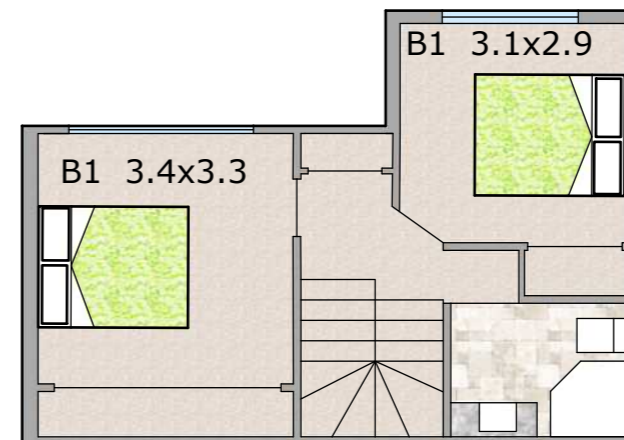
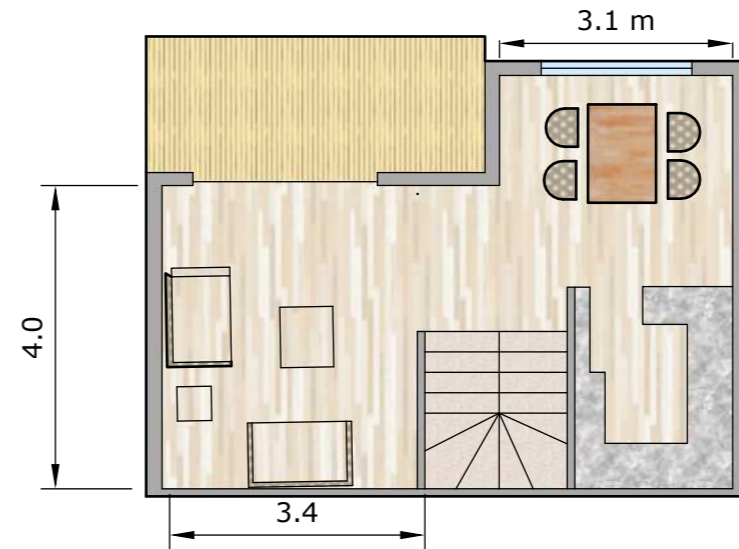
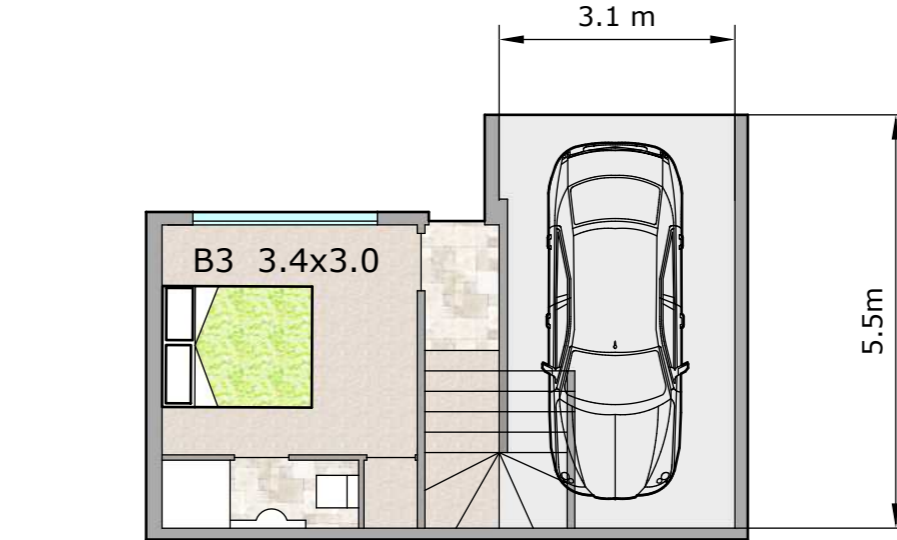


# Plan B

3 bedroom, 2 bathroom, garage

## floor areas

ground	38.2sm
middle	38.2sm
top	38.2sm
	114.6sm



Potential  
 8 Waita Lane, Hobsonville  
 Auckland

Concept  
 House Plans

DRAFT